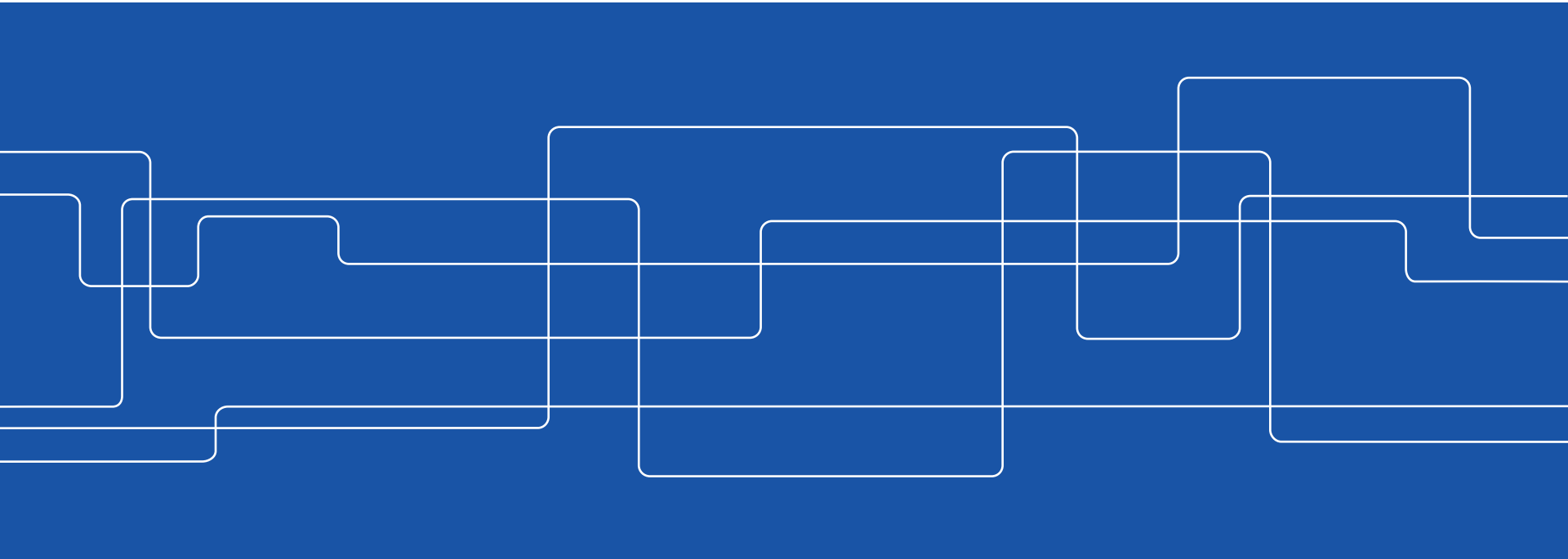


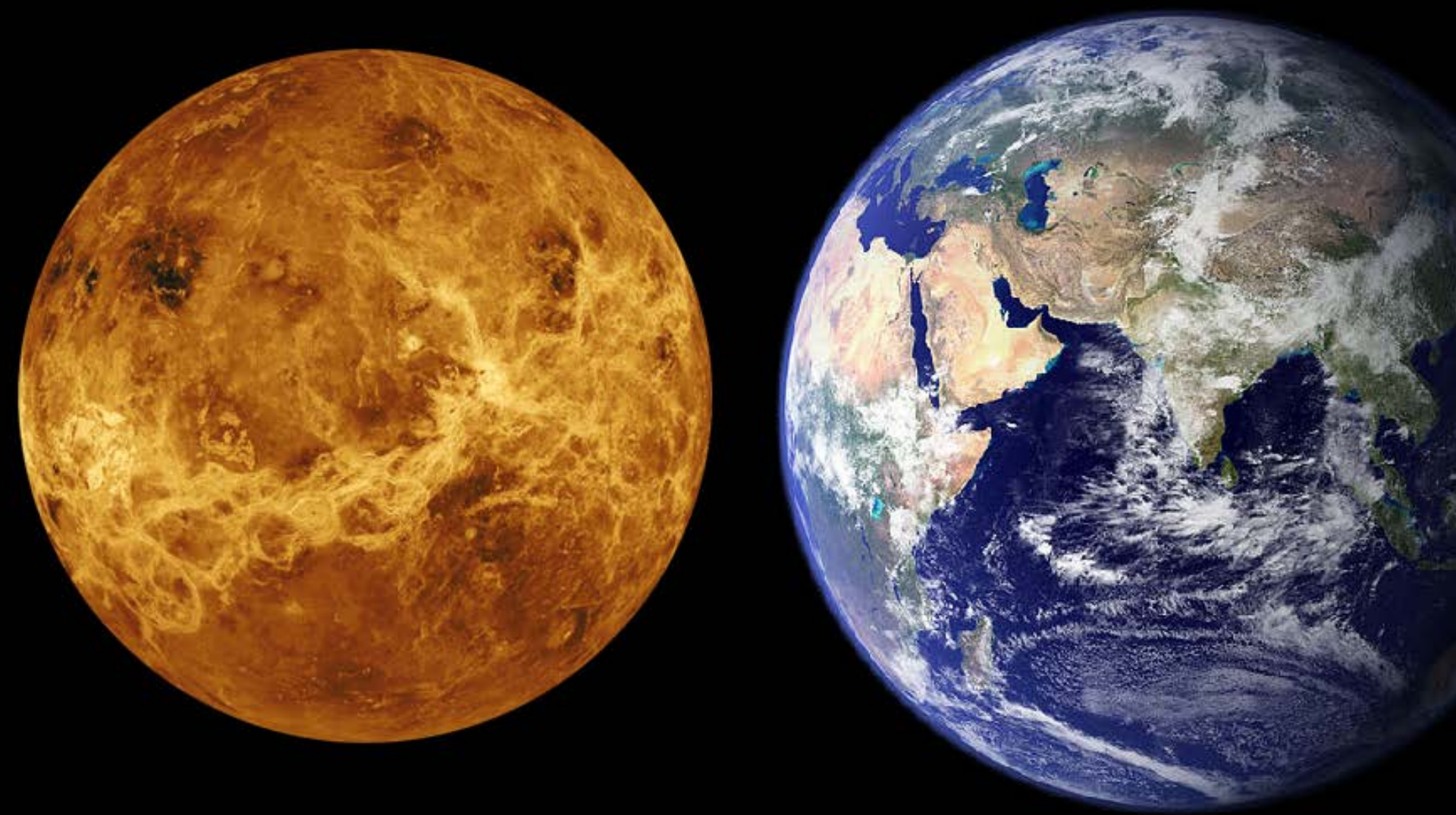


# Working on Venus

Professor Mikael Östling

Adjunct Professor Christer Fuglesang





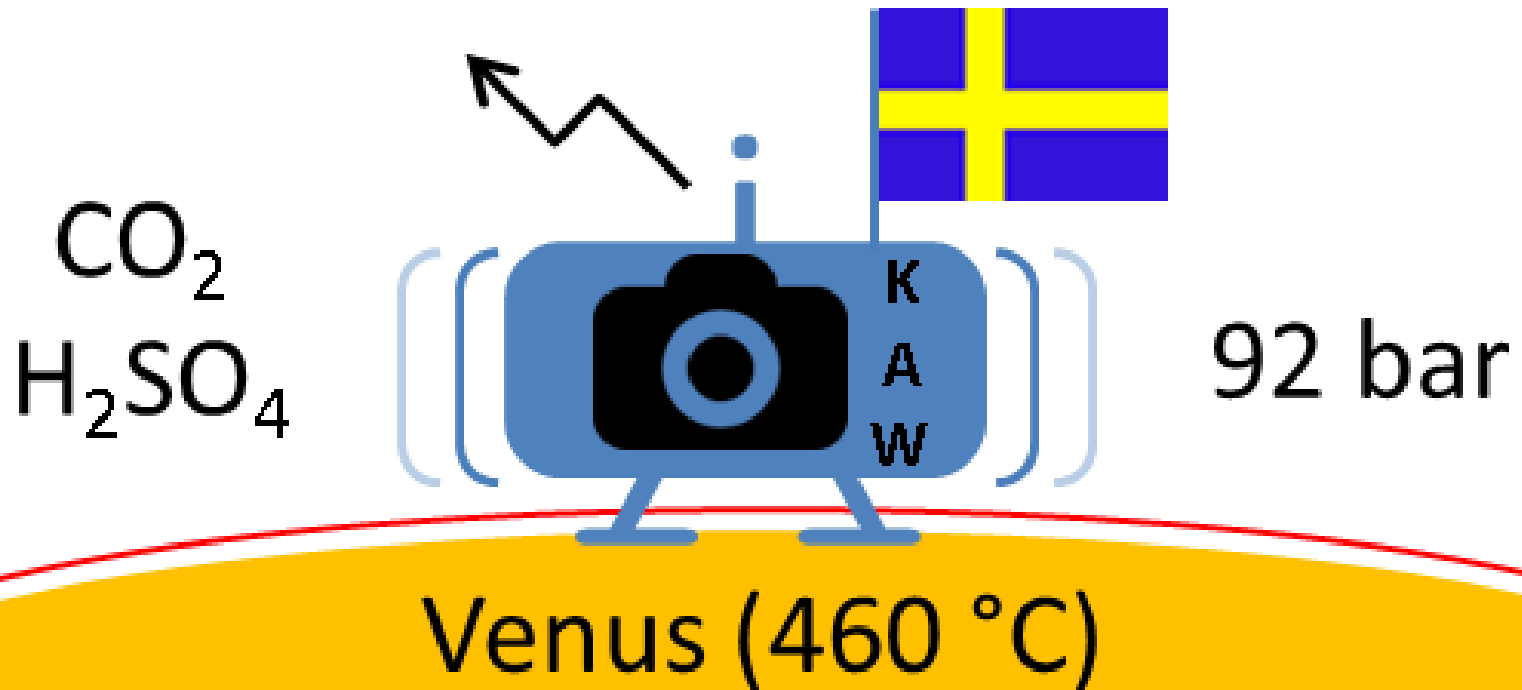


# Working on Venus

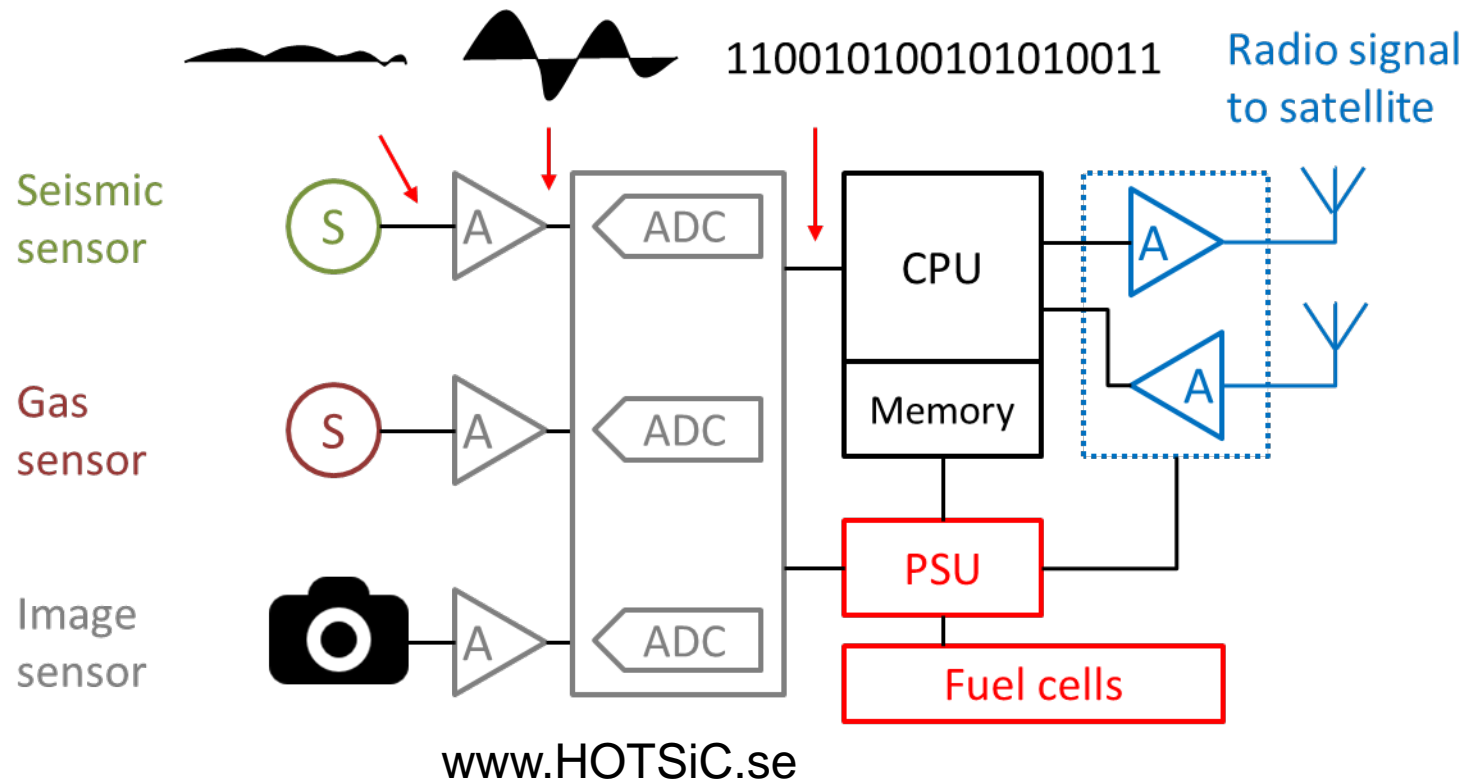
Knut and Alice Wallenberg Foundation, 23 MSEK 5 Years

- Demonstrate all the electronics needed for working on Venus
- Surface temperature of 460 °C is extremely challenging
- Earlier landers on Venus in the 70's failed after a few hours
- Scientific investigation of
  - atmosphere of Venus
  - seismic activities
  - over time
  - useful for climate modeling and planetary understanding
- Answer the question of whether there is or has been life on Venus

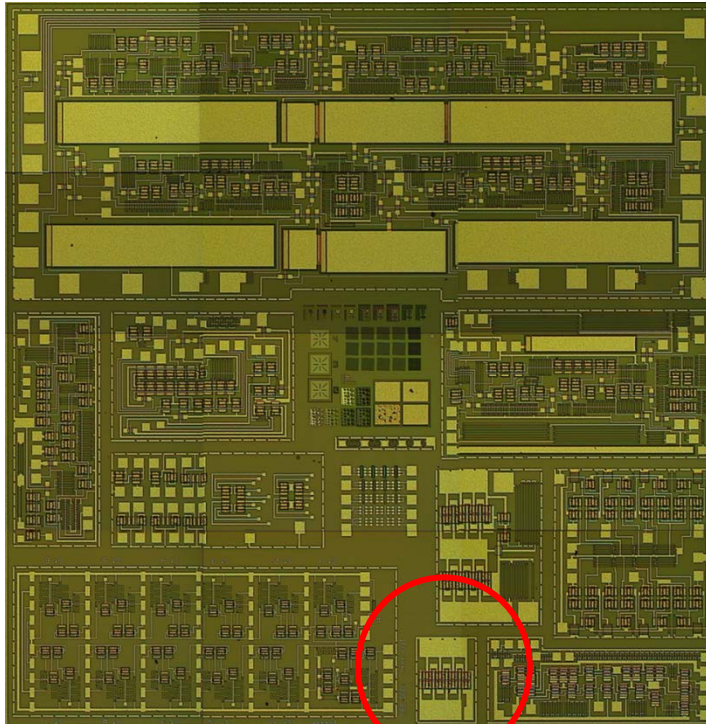
# Working on Venus



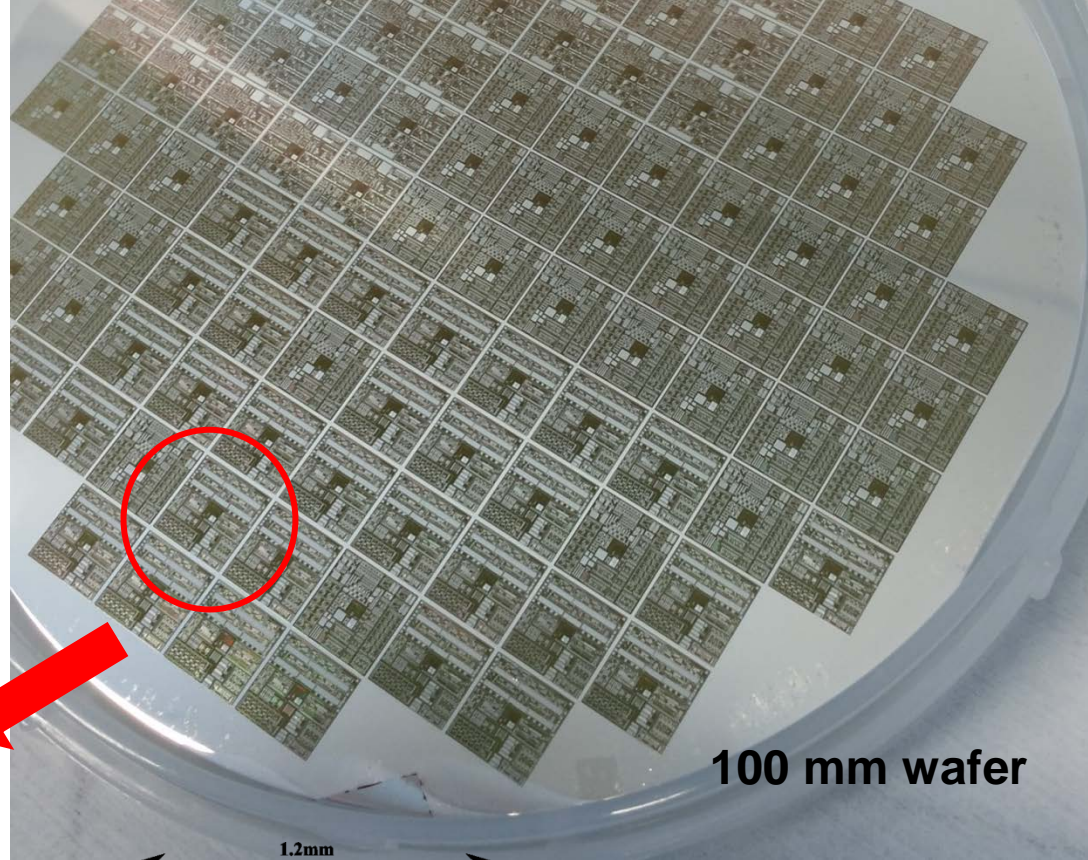
# Simplified Block Diagram



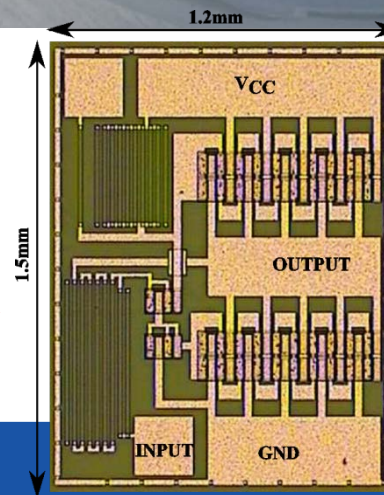
# Results so far



Test circuits



100 mm wafer



Analog and Digital ICs

# HOT Measurements, 600 °C

